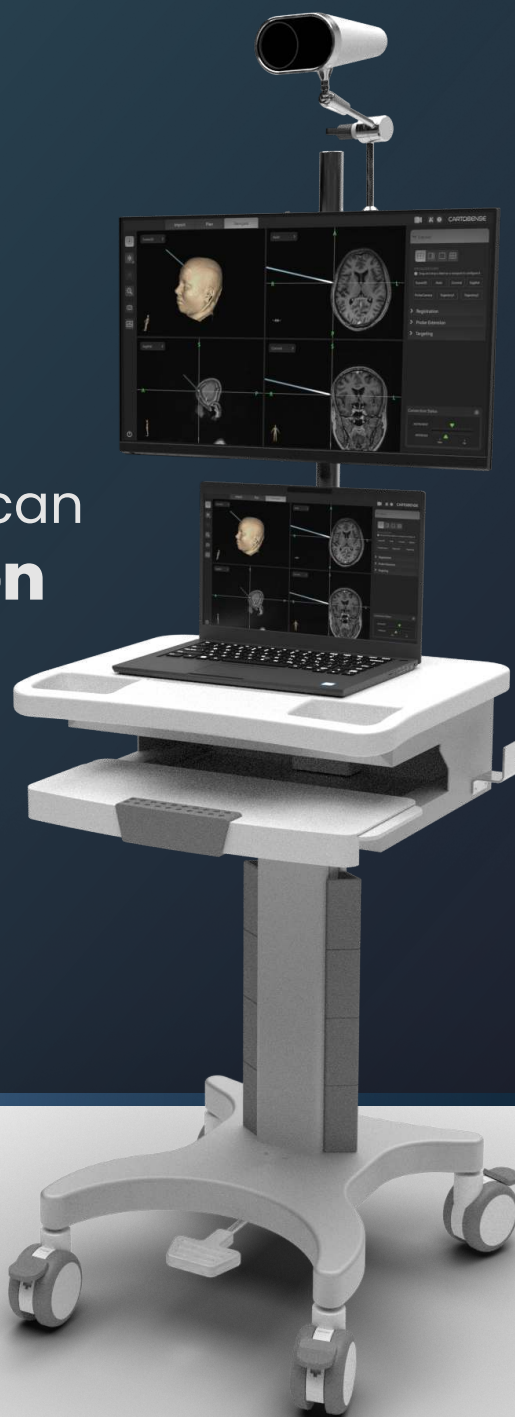


CARTOSENSE

Navigation you can  
**always rely on**

**C75**

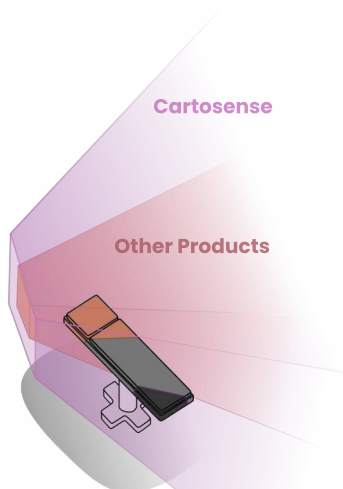
*Surgical Navigation*



## Versatile.

### Mount and forget

With a tracking volume so large that the camera can always see your instruments, fiddling with camera positioning is a thing of the past



Comparison of working volumes

## Introducing Single Camera Optical Tracking

### Flexible Mounting

With the universal mounting mechanism, you can flexibly mount the tracking camera on the navigation cart or any post or rail in the OT. The tracking camera always sees the instruments and rarely needs to be moved once set up.

### Superior Tracking Performance

Achieves exacting levels of accuracy in the largest working volume on the market.

Maintaining line of sight only to a single camera is a breeze compared to conventional stereoscopic systems, reducing interruptions.

# Unobtrusive.

## Miniaturized Navigation

Lets you work without getting in the way



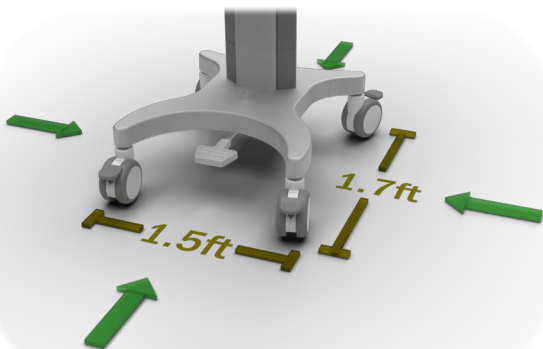
## Focus on the patient, not the equipment

Lets you focus your complete attention on the patient.

The slender cranial probe can navigate your procedures without having to move the operating microscope.

## Compact and space saving

Occupies minimum space in your operation theatre and allows OT staff and other equipment to move freely while navigating.

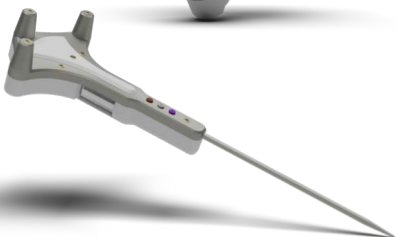


CARTOSENSE

# Dependable.

## Robust workflows, rugged instruments

Seamlessly integrates into your regular clinical workflows and always delivers



## 👤 Advanced Registration

Advanced patient registration algorithms that can perform registration in any patient position – supine, prone, left lateral and right lateral. No workarounds required.

## 🕒 Reliable Tracking

Bidirectional wireless link enables automatic identification of instruments and allows interaction with system software from the sterile field.

Active LED optical tracking is highly resistant to tracking losses due to blood spills and dirt accumulation and always performs up to the mark.

# Frameless Stereotaxy



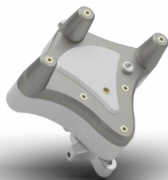
## Minimally Invasive

The frameless stereotaxy accessory lets you perform stereotactic procedures through a burr hole

## Uncompromising Accuracy

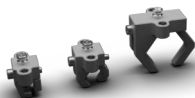
Target trajectories and points inside the brain with unerring accuracy

# Navigate Any Instrument\*



## Supports a wide range of instruments

With the Universal Instrument Tracker, you can accurately navigate a variety of instruments with a quick calibration setup.



## Your OT, Your Instruments

We are committed to building an open platform. Our workflows have been designed to give you maximum navigation accuracy with instruments that you already use.

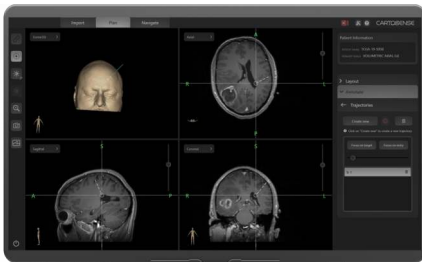
\*refer to the instructions for use for the supported geometries of instruments that can be navigated



# Powerful Software At Your Fingertips

## Merge Multi-Modal Images

Merge images from multiple modalities and navigate simultaneously on merged images



## Plan and Target

Create precise plans on patient images pre-operatively and accurately target the plans intra-operatively

## Control the software from the sterile field

Control key functions of the software from the sterile field with the click of a button on the sterile probe



## C75 Cart

- 24-inch Touchscreen Monitor
- Compact footprint in the OT
- Plug and play design



## C75 Mobile

- Flexible navigation in smallest-ever form factor
- Maximum utilization of pre-existing OT infrastructure



---

Founded by alumni of IIT Madras, Cartosense's technology has won global awards

---

## Partners

Cartosense is supported by marquee institutions, investors and partners



# CARTOSENSE

**Cartosense Private Limited**

IKP Eden, 16, Bhuvanappa layout,  
Tavarekere Main Rd, Bengaluru, 560029  
India

[sales@cartosense.com](mailto:sales@cartosense.com)

+91 1800-570-0107

[www.cartosense.com](http://www.cartosense.com)

SUBJECT TO CHANGE WITHOUT NOTICE