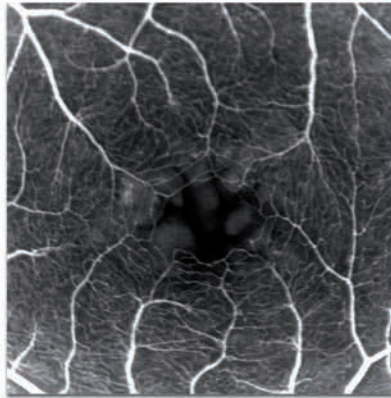


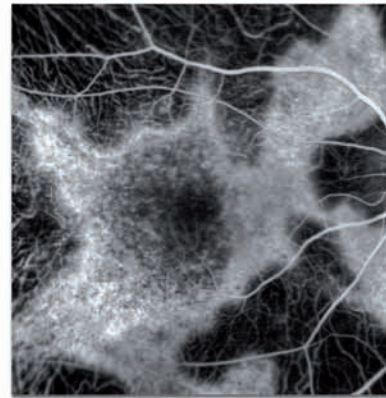
SPECTRALIS® HRA

Video Angiography and Laser Fundus Photography

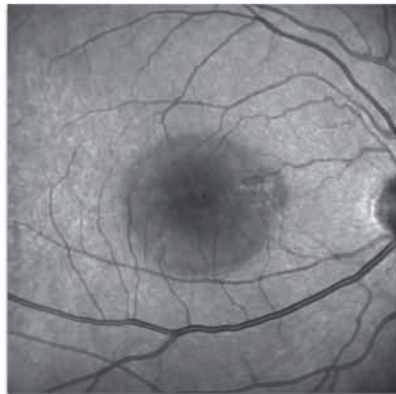
- Clear, crisp dynamic angiography combined with advanced cSLO imaging modalities
 - Infrared imaging
 - BluePeak blue laser autofluorescence ideal for RPE metabolic mapping
 - Red-Free imaging
 - Choice of FA only or FA and ICGA
- Upgradable platform with panning camera head to include SD-OCT
 - Capable of 55° wide field and 150° ultra-wide field imaging
- Powered by confocal scanning laser (cSLO) technology for improved image quality, patient comfort, poor dilator effectiveness and crystal clear videos
- Proven technologies deliver precision, detail and versatility.
 - TruTrack™ active eye tracking
 - Heidelberg Noise Reduction™
 - Multi-modality imaging



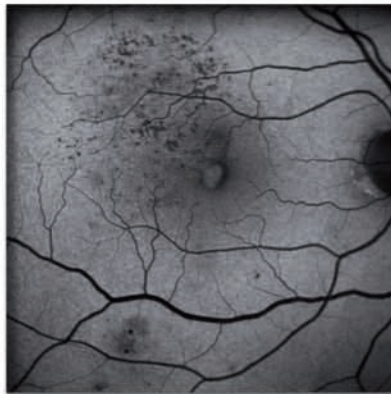
Fluorescein Angiography



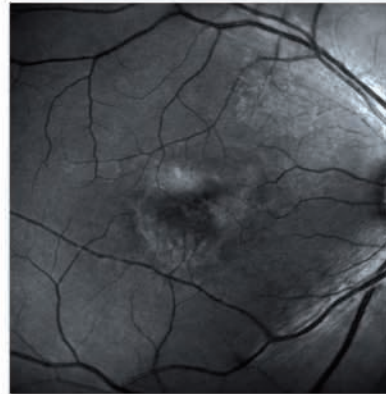
ICG Angiography



Infrared



BluePeak Blue Laser Autofluorescence



Red-Free

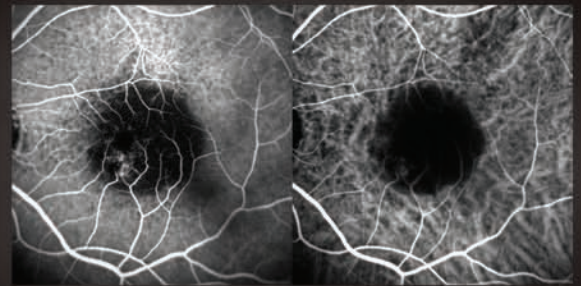


The Diagnostic Power of Video Angiography

Video angiography creates a dynamic record of vessel filling from the first seconds after injection through the end of the early phase. The video file allows clinicians to replay the angiogram as needed to identify leaks and define the treatment plan.

The multi-modality SPECTRALIS HRA offers both fundus and iris FA as well as simultaneous FA and ICGA. SPECTRALIS video angiography can also be combined with red-free, infrared, and BluePeak blue laser autofluorescence.

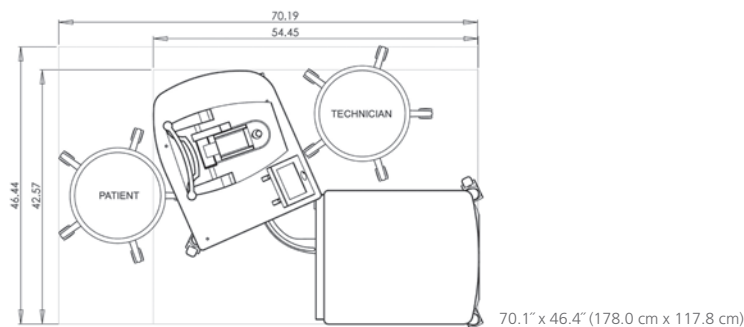
Available with either 4 or 5 imaging modes, SPECTRALIS HRA provides a virtual 3D evaluation of ophthalmic lesions.



Simultaneous FA and ICGA

Specifications*

SPECTRALIS® HRA



Computer Hardware

- Quad Core processor
- Nvidia graphics card
- 24 inch, 1920 x 1200 monitor

Light Sources

- 488 nm laser
- 790 nm laser
- 820 nm laser

Imaging Modes

- BluePeak blue laser autofluorescence
- Infrared
- Red-free
- Fluorescein angiography
- ICG angiography

Fundus Imaging Specifications

- Confocal scanning laser ophthalmoscope (cSLO)
- Field of view max.: 30° x 30°
- Isotropic resolution:
 - High Speed Mode: 11 µm
 - High Resolution Mode: 5 µm
- Wide Field Imaging:
 - ART composite up to 125°
 - Optional 55° lens
 - Optional 150° contact lens

Pupil Diameter

- ≥ 2.5 mm

SPECTRALIS Models

		OCT	OCT	OCT ^{PLUS}	OCT ^{PLUS}	HRA	FA+OCT	HRA+OCT
		2 Mode	with BluePeak 3 Mode	2 Mode	with BluePeak 3 Mode	5 Mode	5 Mode	6 Mode
Spectral Domain OCT		■	■	■	■		■	■
Fundus Imaging Modes	Infrared Imaging	■	■	■	■	■	■	■
	BluePeak™ blue laser autofluorescence		■		■	■	■	■
	Red-free Imaging					■	■	■
	Fluorescein Angiography					■	■	■
	ICG Angiography					■		■
Panning Camera				■	■	■	■	■
Upgradable Hardware				■	■	■	■	■

TruTrack™ active eye tracking • Heidelberg Noise Reduction™ • HEYEX™ Image Management Software

SPECTRALIS HRA video angiography camera is available in 4 mode (with FA) and 5 mode (with FA and ICGA).

* Specifications subject to change without notice.

For more information, call 800-931-2230 or visit www.HeidelbergEngineering.com

HEIDELBERG ENGINEERING

Corporate Headquarters

Heidelberg Engineering GmbH • Tiergartenstr. 15 • 69121 Heidelberg • Germany
Phone + 49 6221 6463-0 • Fax +49 6221 646362 • www.HeidelbergEngineering.de

U.S.A.

Heidelberg Engineering, Inc. • 1808 Aston Avenue, Suite 130 • Carlsbad, CA 92008
Phone 760-536-7000 • Fax 760-536-7100 • www.HeidelbergEngineering.com